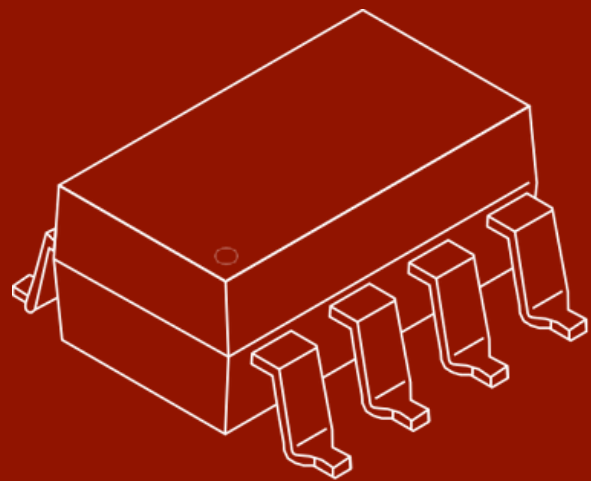
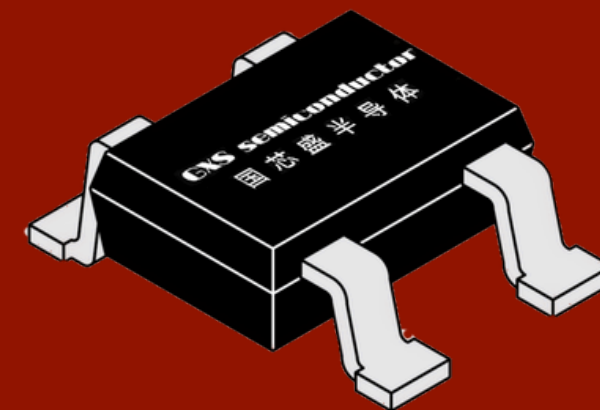


致力成为全球领先的隔离器件制造商  
Strive to become the world's leading manufacturer of isolation devices



# 光耦产品目录

## OPTOCOUPLER CATALOG



无锡国芯盛半导体有限公司

WUXI GUOXINSHENG SEMICONDUCTOR CO.,LTD.

总部：无锡市梁溪区江海西路888号-C663

Headquarters: No. 888 Jianghai West Road, Liangxi District, Wuxi City-C663



扫码查看公众号

2024-V1

高端光耦 首选国芯盛  
PROMINENT OPTOCOUPLER PREFERRED GXSSIMI



## ABOUT US

Wuxi Guoxinsheng Semiconductor Co., Ltd. focuses on chip design, R & D and manufacturing, and has built a complete industrial chain from product research and development, silicon wafer cutting and grinding, chip manufacturing, packaging testing to sales services, and has attracted a large number of skilled and high-quality technicians. With 2 chief engineers, 6 senior engineers, 16 engineers, 20 senior technicians, and 23 intermediate technicians, the strong technical team can provide customers with high-quality, safe and reliable products and professional product development solutions. The company organizes production in strict accordance with the ISO9001, TS16949 quality management system and ISO14000 environmental management system. The products comply with the European Directive (ROHS) and can provide halogen-free products that meet customer needs.

Since its establishment, the company's products have covered optocouplers, MOS field effect transistors (low, medium and high voltage MOSFETs), and general analog chips. Maintain close cooperation with domestic first-class chip foundries and packaging and testing foundries to ensure product quality and stable supply.

Products have been widely used in smart home, IoT Internet of Things, new energy, industrial control and smart factories, medical equipment, communication systems, automotive electronics and other markets;

The company always regards "focus, professionalism and efficiency" as the foundation of its business operations. Taking providing customers with high-quality semiconductor devices as its core competitiveness. Combine an open management culture and serve customers with a united, enterprising, and positive professional spirit.

## 关于国芯盛

无锡国芯盛半导体有限公司专注于芯片设计、研发和制造业务，构建了从产品研发、硅片切磨、芯片制造、封装测试到销售服务的完整产业链，并吸引了大量技术精湛、高素质的技术人员。拥有总工程师2人、高级工程师6人，工程师16人，高级技术员20人，中级技术人员23人，雄厚的技术团队可以为客户优质、安全、可靠的产品和专业的产品研发方案。公司严格按照ISO9001、TS16949质量管理体系和ISO14000环境管理体系组织生产，产品符合欧盟指令（ROHS），并可以提供满足客户需要的无卤素产品。

公司自成立以来，产品已涵盖光耦、MOS场效应管（低、中、高压MOSFET）、通用模拟芯片。与国内一流的芯片代工厂，封装测试代工厂保持密切的合作，保证产品的质量品质和稳定供货。

产品已广泛应用于智能家居、IoT物联网、新能源、工业控制和智能工厂、医疗设备、通信系统、汽车电子等市场；

公司始终把“专注、专业、高效”作为企业运营的基础。以为客户提供优质的半导体器件为核心竞争力。结合开放式的管理文化，团结进取、积极向上的职业精神为客户服务，国芯盛，中国“芯”



 **总部** 江苏·无锡

Headquarters Wuxi · Jiangsu

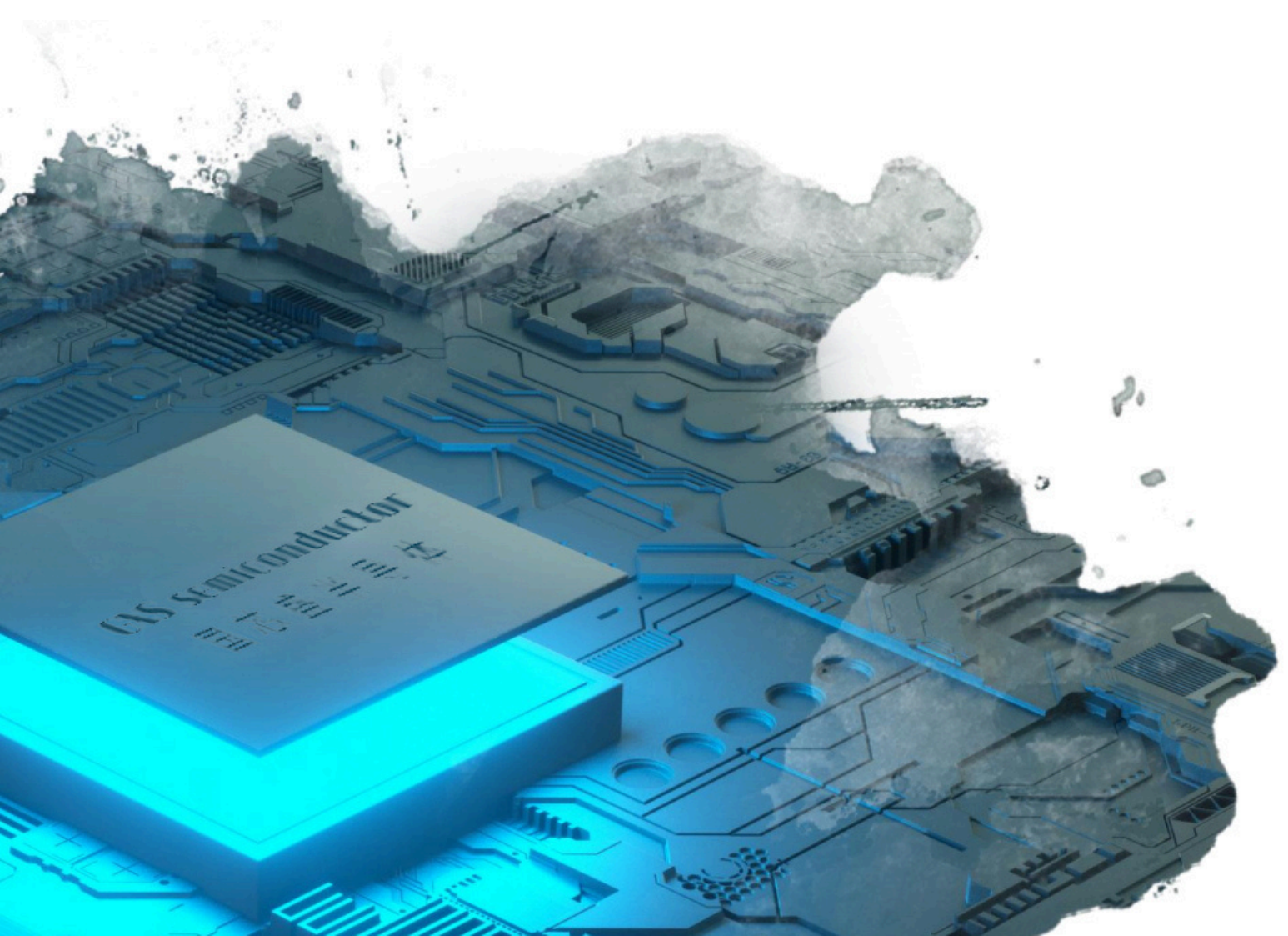
 **办事处** 无锡·上海·深圳·成都

Offices Wuxi · Shanghai · Shenzhen · Chengdu

 **设计与制造中心** 台北·韩国·天水·南通·嘉兴

Design and Manufacturing Center

China-Taibei · South Korea · Tianshui · Nantong · Jiaxing



## 可靠性检验 Reliability test

试验项目 Test Item	试验条件 Test Condition
温/湿度试验 Temperature/humidity test	85°C/85%RH, JEDEC22-A101
温度循环试验 temperature cycle test	-65°C~150°C, JEDEC22-A104
高温存储试验 high-temperature storage test	150°C JEDEC22-A103
高压蒸煮试验 high-pressure cooking test	121°C/100%RH,205KPa JEDEC22-A102
回流焊 reflow	260°C J-STD-020
易焊性 solderability	245°C±5°C 5S, JEDEC22-B102

**高温储存**

HTST

**温湿度储存**

THT

**可焊性试验**

Solderability

**高温正偏/反偏**

HTRB/HTGB

**吸湿敏感度**

MSL

**温度循环**

TCL

**高温蒸煮**

PCT

\*根据客户要求执行JEDEC的各级标准考核可靠性试验项目

## 晶体管光耦 Photo Transistor Coupler

晶体管光耦是一款由发光二极管和光电晶体管组成的光电耦合器，通过光电效应和晶体管放大特性，实现电信号的光学隔离与传输，确保信号稳定可靠。晶体管光耦包含晶体管光耦(交流)和晶体管光耦(直流)两大类。

The Photo Transistor Coupler consist of infrared emitting diode and phototransistors. Through the photoelectric effect and transistor amplification characteristics, it achieves optical isolation and transmission of electrical signals, ensuring signal stability and reliability. The Photo Transistor optocouplers include two categories: transistor optocouplers (AC) and transistor optocouplers (DC).

### 产品特点 Product Features

**电流转换率高达600%**  
The current conversion rate is up to 600%

**隔离电压高达5000V rms**  
Isolation voltage is up to 5000 Vrms

**抗干扰能力强，有效抵御复杂电磁环境中的干扰**  
Strong anti-interference ability, effectively resist the interference in the complex electromagnetic environment

**功耗极低，适合各种低功耗应用需求**  
power consumption is very low, suitable for a variety of low power consumption application requirements

**符合ROHS、REACH、无卤素要求**  
Compliant with ROHS、REACH、Halogen-Free Requirements

**通过CQC、UL、VDE等安规认证**  
Acquired CQC、UL、WDE Safety Certification

### 产品应用 Product Applications

**电源管理:用于开关电源、UPS、电源模块中的反馈控制和信号隔离**  
Power management: feedback control and signal isolation in switching power supply, UPS, and power module

**工业控制:在PLC和工业自动化控制系统中实现信号传输和隔离，保护控制系统**  
industrial control: implement signal transmission and isolation in PLC and industrial automation control systems to protect the control system

**通信设备:用于信号隔离和传输，提高系统抗干扰能力**  
communication equipment: it is used for signal isolation and transmission to improve the anti-interference ability of the system

**家用电器:保护电路，提高设备可靠性**  
Household appliances: Protect the circuit to improve equipment reliability

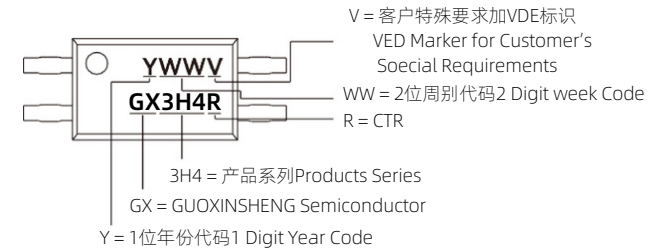
**测量仪器:确保信号隔离和数据准确性**  
Measurement instrument: Ensure signal isolation and data accuracy

### 封装形式 Package Type

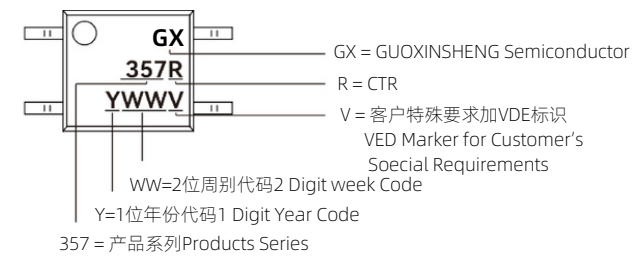
SSOP4、SOP4、LSOP4、LSOP5、DIP4/SMD4、DIP6/SMD6

### 产品镭射与料号规则 Products Surface Marking And Part Number Rules

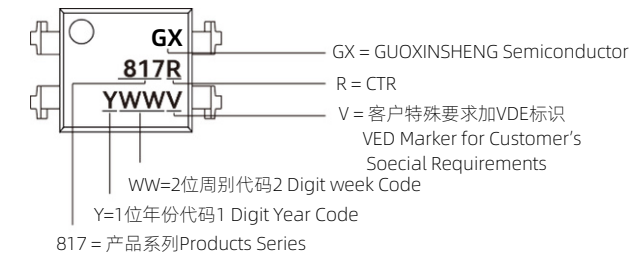
#### SSOP4



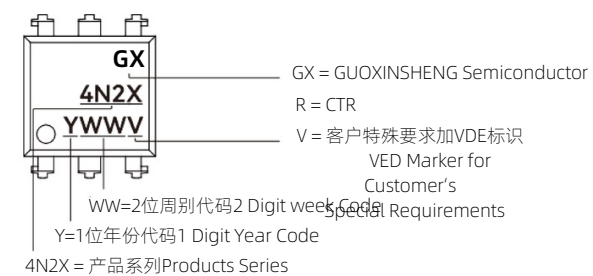
#### SOP4/LSOP4/LSOP5



#### DIP4/SMD4



#### DIP6/SMD6



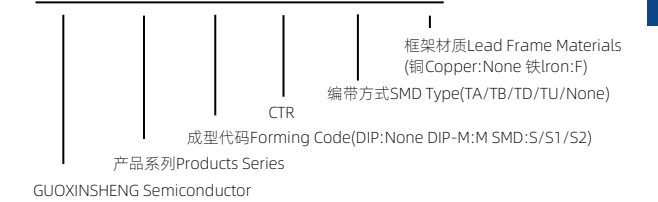
#### GX 3H4 A - TA



#### GX 357 C - TA



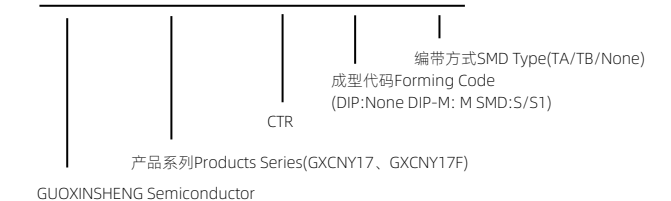
#### GX 817 S1 - C - TU - F



#### GX 4N25 - S1 - TA



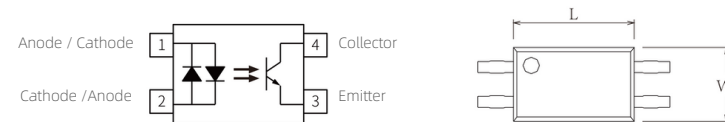
#### GX CNY17F- 3 - S1 - TA



**晶体管光耦**  
Photo Transistor Coupler(AC)

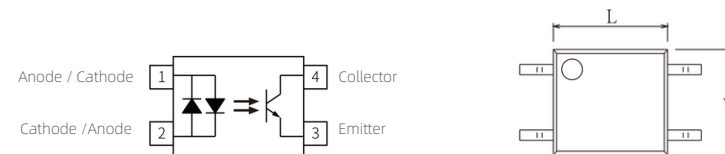
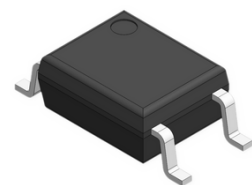
**晶体管光耦**  
Photo Transistor Coupler(AC)

**SSOP4**



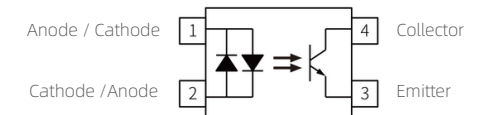
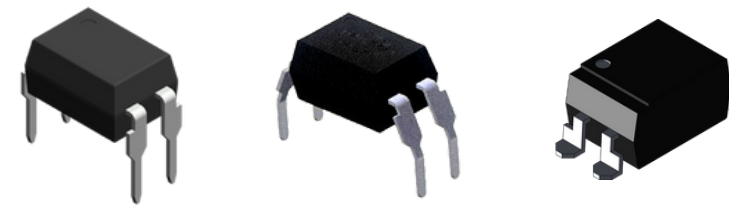
PN Series	Size (L x W x H/mm)	V <sub>F</sub> (V)	BV <sub>CEO</sub> (MIN) (V)	V <sub>CE(SAT)</sub> (MAX) (V)	I <sub>F</sub> (mA)	CTR (%)	T <sub>r</sub> (MAX) (US)	T <sub>f</sub> (MAX) (US)	T <sub>opr</sub> (MIX) (°C)	T <sub>opr</sub> (MAX) (°C)	V <sub>iso</sub> (Vrms)
GX3H4	4.4x2.70x2.0	1.2	80	0.2	±1	20~300	18	18	-55	100	3750
GX3H4A	4.4x2.70x2.0	1.2	80	0.2	±1	50~150	18	18	-55	100	3750
GX3H4B	4.4x2.70x2.0	1.2	80	0.2	±1	80~300	18	18	-55	100	3750

**SOP4**



PN Series	Size (L x W x H/mm)	V <sub>F</sub> (V)	BV <sub>CEO</sub> (MIN) (V)	V <sub>CE(SAT)</sub> (MAX) (V)	I <sub>F</sub> (mA)	CTR (%)	T <sub>r</sub> (MAX) (US)	T <sub>f</sub> (MAX) (US)	T <sub>opr</sub> (MIX) (°C)	T <sub>opr</sub> (MAX) (°C)	V <sub>iso</sub> (Vrms)
GX3H4	4.4x2.70x2.0	1.2	80	0.2	±1	20~300	18	18	-55	100	3750
GX3H4A	4.4x2.70x2.0	1.2	80	0.2	±1	50~150	18	18	-55	100	3750
GX3H4B	4.4x2.70x2.0	1.2	80	0.2	±1	80~300	18	18	-55	100	3750

**DIP4/SMD4**

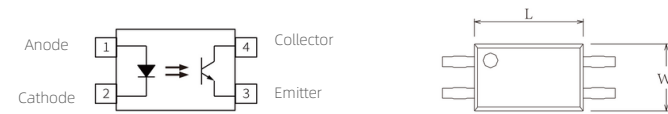
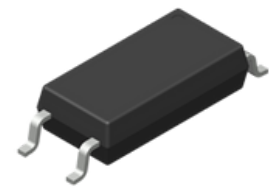


PN Series	Size (L x W x H/mm)	V <sub>F</sub> (V)	BV <sub>CEO</sub> (MIN) (V)	V <sub>CE(SAT)</sub> (MAX) (V)	I <sub>F</sub> (mA)	CTR (%)	T <sub>r</sub> (MAX) (US)	T <sub>f</sub> (MAX) (US)	t <sub>(on)</sub> (US)	t <sub>(off)</sub> (US)	T <sub>opr</sub> (MIX) (°C)	T <sub>opr</sub> (MAX) (°C)	V <sub>iso</sub> (Vrms)
GX814	6.5x4.58x3.5	1.2	80	0.2	±1	20~300	18	18	-	-	-55	110	5000
GX814A	6.5x4.58x3.5	1.2	80	0.2	±1	50~150	18	18	-	-	-55	110	5000

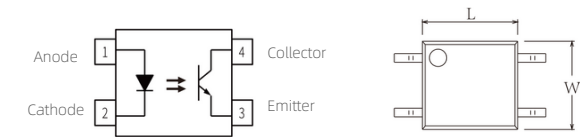
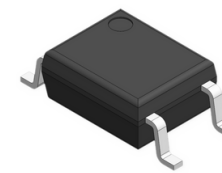
晶体管光耦  
Photo Transistor Coupler (DC)

晶体管光耦  
Photo Transistor Coupler(DC)

SSOP4



SOP4

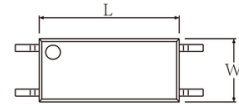
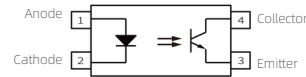


PN Series	Size (L x W x H/mm)	V <sub>F</sub> (V)	BV <sub>CEO</sub> (MIN) (V)	V <sub>CE(SAT)</sub> (MAX) (V)	I <sub>F</sub> (MA)	CTR (%)	T <sub>r</sub> (US)	T <sub>f</sub> (US)	Topr (MIX) (°C)	Topr (MAX) (°C)	Viso (Vrms)
GX3H7	4.4x2.70x2.0	1.2	80	0.2	5	50~600	5	3	-55	+110	3750
GX3H7A	4.4x2.70x2.0	1.2	80	0.2	5	80~160	5	3	-55	+110	3750
GX3H7B	4.4x2.70x2.0	1.2	80	0.2	5	130~260	5	5	-55	+110	3750
GX3H7C	4.4x2.70x2.0	1.2	80	0.2	5	200~400	5	3	-55	+110	3750
GX3H7D	4.4x2.70x2.0	1.2	80	0.2	5	300~600	5	3	-55	+110	3750
GX3H7E	4.4x2.70x2.0	1.2	80	0.2	5	100~200	5	3	-55	+110	3750
GX3H7F	4.4x2.70x2.0	1.2	80	0.2	5	150~300	5	3	-55	+110	3750
GX3H7H	4.4x2.70x2.0	1.2	80	0.2	10	40~80	5	3	-55	+110	3750
GX3H7I	4.4x2.70x2.0	1.2	80	0.2	10	63~125	5	3	-55	+110	3750
GX3H7J	4.4x2.70x2.0	1.2	80	0.2	10	100~200	5	3	-55	+110	3750
GX3H7K	4.4x2.70x2.0	1.2	80	0.2	10	160~320	5	3	-55	+110	3750
GX3H7L	4.4x2.70x2.0	1.3	80	0.3	0.1	50~600	8	12	-55	+110	3750
GX3H7HT	4.4x2.70x2.0	1.2	80	0.3	5	80~260	6	8	-55	+125	3750
GX3H7HTA	4.4x2.70x2.0	1.2	80	0.3	5	80~160	6	8	-55	+125	3750
GX3H7HTB	4.4x2.70x2.0	1.2	80	0.3	5	130~260	6	8	-55	+125	3750
GX3H7U	4.4x2.70x2.0	1.3	60	0.4	0.5	50~600	8	10	-40	+125	3750
GX3H7UA	4.4x2.70x2.0	1.3	60	0.4	0.5	100~200	8	10	-40	+125	3750
GX3H7UB	4.4x2.70x2.0	1.3	60	0.4	0.5	150~300	8	10	-40	+125	3750
GX3H7UC	4.4x2.70x2.0	1.3	60	0.4	0.5	200~400	8	10	-40	+125	3750

PN Series	Size (L x W x H/mm)	V <sub>F</sub> (V)	BV <sub>CEO</sub> (MIN) (V)	V <sub>CE(SAT)</sub> (MAX) (V)	I <sub>F</sub> (MA)	CTR (%)	T <sub>r</sub> (US)	T <sub>f</sub> (US)	Topr (MIX) (°C)	Topr (MAX) (°C)	Viso (Vrms)
GX357	4.4x4.1x2.0	1.2	80	0.2	5	50~600	3	4	-55	+110	3750
GX357A	4.4x4.1x2.0	1.2	80	0.2	5	80~160	3	4	-55	+110	3750
GX357B	4.4x4.1x2.0	1.2	80	0.2	5	130~260	3	4	-55	+110	3750
GX357C	4.4x4.1x2.0	1.2	80	0.2	5	200~400	3	4	-55	+110	3750
GX357D	4.4x4.1x2.0	1.2	80	0.2	5	300~600	3	4	-55	+110	3750
GX357E	4.4x4.1x2.0	1.2	80	0.2	5	100~200	3	4	-55	+110	3750
GX357F	4.4x4.1x2.0	1.2	80	0.2	5	150~300	3	4	-55	+110	3750
GX357NL	4.4x4.1x2.0	1.3	75	0.4	0.1	50~200	8	12	-55	+110	3750
GX357NH	4.4x4.1x2.0	1.2	80	0.3	5	50~600	6	8	-55	+125	3750
GX357NHA	4.4x4.1x2.0	1.2	80	0.3	5	80~160	6	8	-55	+125	3750
GX357NHB	4.4x4.1x2.0	1.2	80	0.3	5	130~260	6	8	-55	+125	3750
GX357NHC	4.4x4.1x2.0	1.2	80	0.3	5	200~400	6	8	-55	+125	3750
GX357NU	4.4x4.1x2.0	1.3	60	0.35	0.5	50~600	3	4	-40	+125	3750
GX357NUA	4.4x4.1x2.0	1.3	60	0.35	0.5	100~200	3	4	-40	+125	3750
GX357NUB	4.4x4.1x2.0	1.3	60	0.35	0.5	150~300	3	4	-40	+125	3750
GX357NUC	4.4x4.1x2.0	1.3	60	0.35	0.5	200~400	3	4	-40	+125	3750

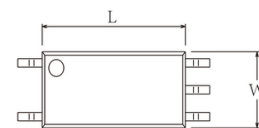
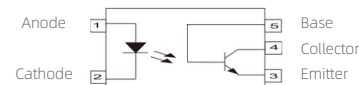
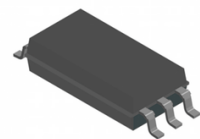
**晶体管光耦**  
Photo Transistor Coupler (DC)

**LSOP4**



PN Series	Size (L x W x H/mm)	V <sub>F</sub> (V)	BV <sub>CEO</sub> (MIN) (V)	V <sub>CE(SAT)</sub> (MAX) (V)	I <sub>F</sub> (mA)	CTR (%)	T <sub>r</sub> (MAX) (US)	T <sub>f</sub> (MAX) (US)	t <sub>(on)</sub> (US)	t <sub>(off)</sub> (US)	T <sub>opr</sub> (MIX) (°C)	T <sub>opr</sub> (MAX) (°C)	V <sub>iso</sub> (Vrms)
GX1010	7.6x3.6x2.2	1.45	80	0.3	5	50~600	2	3	4	3	-55	+110	5000
GX1012	7.6x3.6x2.2	1.45	80	0.3	10	63~125	2	3	4	3	-55	+110	5000
GX1013	7.6x3.6x2.2	1.45	80	0.3	10	100~200	2	3	4	3	-55	+110	5000
GX1014	7.6x3.6x2.2	1.45	80	0.3	10	160~320	2	3	4	3	-55	+110	5000
GX1017	7.6x3.6x2.2	1.45	80	0.3	5	80~160	2	3	4	3	-55	+110	5000
GX1018	7.6x3.6x2.2	1.45	80	0.3	5	130~260	2	3	4	3	-55	+110	5000
GX1019	7.6x3.6x2.2	1.45	80	0.3	5	200~400	2	3	4	3	-55	+110	5000
GX101L	7.6x3.6x2.2	1.3	80	0.3	0.1	50~600	8	12	-	-	-55	+110	5000
GX1010H	7.6x3.6x2.2	1.2	80	0.35	5	50~600	6	8	-	-	-55	+125	5000
GX101U	7.6x3.6x2.2	1.3	60	0.35	0.5	50~600	-	-	1	50	-40	+125	5000

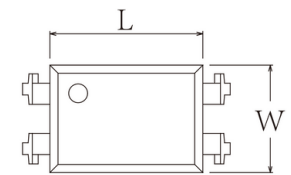
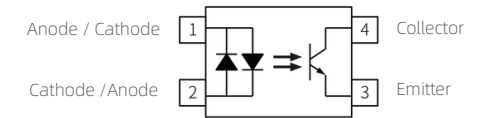
**LSOP5**



PN Series	Size (L x W x H/mm)	V <sub>F</sub> (V)	BV <sub>CEO</sub> (MIN) (V)	V <sub>CE(SAT)</sub> (MAX) (V)	I <sub>F</sub> (mA)	CTR (%)	T <sub>r</sub> (MAX) (US)	T <sub>f</sub> (MAX) (US)	t <sub>(on)</sub> (US)	t <sub>(off)</sub> (US)	T <sub>opr</sub> (MIX) (°C)	T <sub>opr</sub> (MAX) (°C)	V <sub>iso</sub> (Vrms)
GX1110	7.6x3.6x2.2	1.45	80	0.3	5	50~600	2	3	4	3	-55	110	5000
GX1112	7.6x3.6x2.2	1.45	80	0.3	10	63~125	2	3	4	3	-55	110	5000
GX1113	7.6x3.6x2.2	1.45	80	0.3	10	100~200	2	3	4	3	-55	110	5000
GX1114	7.6x3.6x2.2	1.45	80	0.3	10	160~320	2	3	4	3	-55	110	5000
GX1116	7.6x3.6x2.2	1.45	80	0.3	5	100~300	2	3	4	3	-55	110	5000
GX1117	7.6x3.6x2.2	1.45	80	0.3	5	80~160	2	3	4	3	-55	110	5000
GX1118	7.6x3.6x2.2	1.45	80	0.3	5	130~260	2	3	4	3	-55	110	5000
GX1119	7.6x3.6x2.2	1.45	80	0.3	5	200~400	2	3	4	3	-55	110	5000

**晶体管光耦**  
Photo Transistor Coupler(DC)

**DIP4/SMD4**



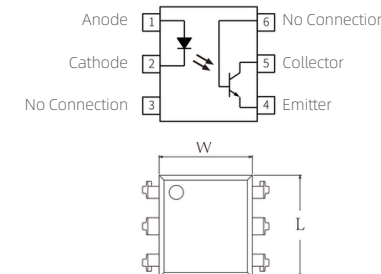
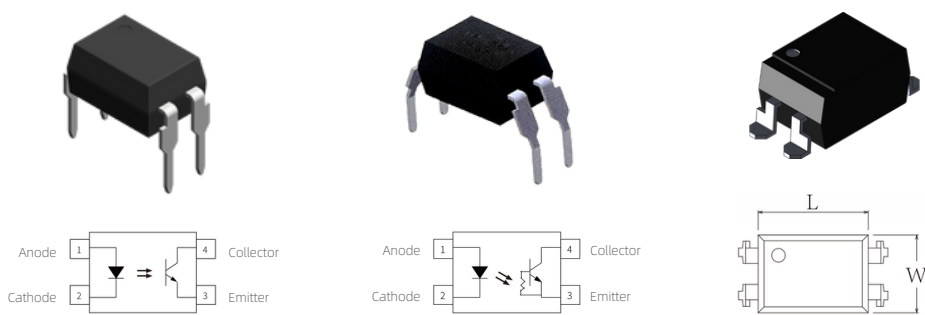
PN Series	Size (L x W x H/mm)	V <sub>F</sub> (V)	BV <sub>CEO</sub> (MIN) (V)	V <sub>CE(SAT)</sub> (MAX) (V)	I <sub>F</sub> (mA)	CTR (%)	T <sub>r</sub> (MAX) (US)	T <sub>f</sub> (MAX) (US)	t <sub>(on)</sub> (US)	t <sub>(off)</sub> (US)	T <sub>opr</sub> (MIX) (°C)	T <sub>opr</sub> (MAX) (°C)	V <sub>iso</sub> (Vrms)
GX816	6.5x4.59x3.5	1.2	80	0.2	5	50~600	4	3	-	-	-55	+110	5000
GX816A	6.5x4.59x3.5	1.2	80	0.2	5	80~160	4	3	-	-	-55	+110	5000
GX816B	6.5x4.59x3.5	1.2	80	0.2	5	130~260	4	3	-	-	-55	+110	5000
GX816C	6.5x4.59x3.5	1.3	80	0.2	5	200~400	4	3	-	-	-55	+110	5000
GX816D	6.5x4.59x3.5	1.2	80	0.2	5	300~600	4	3	-	-	-55	+110	5000
GX816x	6.5x4.59x3.5	1.2	80	0.2	5	100~200	4	3	-	-	-55	+110	5000
GX816Y	6.5x4.59x3.5	1.2	80	0.2	5	150~300	4	3	-	-	-55	+110	5000
GX816l	6.5x4.59x3.5	1.2	80	0.2	5	63~125	4	3	-	-	-55	+110	5000
GX816j	6.5x4.59x3.5	1.2	80	0.2	5	100~200	4	3	-	-	-55	+110	5000
GX816K	6.5x4.59x3.5	1.3	80	0.2	5	160~320	4	3	-	-	-55	+110	5000
GX817	6.5x4.59x3.5	1.2	80	0.2	5	50~600	4	3	-	-	-55	+110	5000
GX817L	6.5x4.59x3.5	1.2	80	0.2	5	50~100	4	3	-	-	-55	+110	5000
GX817A	6.5x4.59x3.5	1.2	80	0.2	5	80~160	4	3	-	-	-55	+110	5000
GX817B	6.5x4.59x3.5	1.2	80	0.2	5	130~260	4	3	-	-	-55	+110	5000
GX817C	6.5x4.59x3.5	1.2	80	0.2	5	200~400	4	3	-	-	-55	+110	5000
GX817D	6.5x4.59x3.5	1.2	80	0.2	5	300~600	4	3	-	-	-55	+110	5000
GX817x	6.5x4.59x3.5	1.2	80	0.2	5	100~200	4	3	-	-	-55	+110	5000
GX817Y	6.5x4.59x3.5	1.2	80	0.2	5	150~300	4	3	-	-	-55	+110	5000
GX817H	6.5x4.59x3.5	1.2	80	0.35	5	50~400	6	8	-	-	-55	+125	5000
GX817HA	6.5x4.59x3.5	1.2	80	0.35	5	80~160	6	8	-	-	-55	+125	5000
GX817HB	6.5x4.59x3.5	1.2	80	0.35	5	130~260	6	8	-	-	-30	+125	5000
GX817HC	6.5x4.59x3.5	1.2	80	0.35	5	200~400	6	8	-	-	-55	+125	5000
GX817LT	6.5x4.59x3.5	1.3	80	0.3	0.1	50~600	8	12	-	-	-55	+110	5000
GX817I	6.5x4.59x3.5	1.2	70	0.2	0.5	100~350	18max	18max	-	-	-30	+100	5000

**晶体管光耦**  
Photo Transistor Coupler (DC)

**晶体管光耦**  
Photo Transistor Coupler(DC)

**DIP4/SMD4**

**DIP6/SMD6**



PN Series	Size (L × W × H/mm)	V <sub>F</sub> (V)	BV <sub>CEO</sub> (MIN) (V)	V <sub>CE(SAT)</sub> (MAX) (V)	I <sub>F</sub> (mA)	CTR (%)	T <sub>r</sub> (MAX) (US)	T <sub>f</sub> (MAX) (US)	t <sub>(on)</sub> (US)	t <sub>(off)</sub> (US)	T <sub>opr</sub> (MIX) (°C)	T <sub>opr</sub> (MAX) (°C)	Viso (Vrms)
GX2501N	6.5×4.58×3.5	1.2	80	0.3	5	80~600	3	5	-	-	-55	+110	5000
GX2501H	6.5×4.58×3.5	1.2	80	0.3	5	80~160	3	5	-	-	-55	+110	5000
GX2501W	6.5×4.58×3.5	1.2	80	0.3	5	130~260	3	5	-	-	-55	+110	5000
GX2501L	6.5×4.58×3.5	1.2	80	0.3	5	200~400	3	5	-	-	-55	+110	5000
GX2501K	6.5×4.58×3.5	1.2	80	0.3	5	300~600	3	5	-	-	-55	+110	5000
GX2501Q	6.5×4.58×3.5	1.2	80	0.3	5	100~200	3	5	-	-	-55	+110	5000
GX2501D	6.5×4.58×3.5	1.2	80	0.3	5	150~300	3	5	-	-	-55	+110	5000
GX2514	6.5×4.58×3.5	1.2	40	0.35	5	50~200	-	-	25max	25max	-55	+110	5000
GX851	6.5×4.58×3.5	1.2	350	0.4	5	50~600	4	5	-	-	-55	+100	5000

PN Series	Size (L × W × H/mm)	V <sub>F</sub> (V)	BV <sub>CEO</sub> (MIN) (V)	V <sub>CE(SAT)</sub> (MAX) (V)	I <sub>F</sub> (mA)	CTR (%)	T <sub>r</sub> (MAX) (US)	T <sub>f</sub> (MAX) (US)	t <sub>(on)</sub> (US)	t <sub>(off)</sub> (US)	T <sub>opr</sub> (MIX) (°C)	T <sub>opr</sub> (MAX) (°C)	Viso (Vrms)
GX4N25	7.12×6.5×3.5	1.2	80	0.5	10	>20	-	-	3	3	-55	+110	5000
GX4N26	7.12×6.5×3.5	1.2	80	0.5	10	>20	-	-	3	3	-55	+110	5000
GX4N27	7.12×6.5×3.5	1.2	80	0.5	10	>10	-	-	3	3	-55	+110	5000
GX4N28	7.12×6.5×3.5	1.2	80	0.5	10	>10	-	-	3	3	-55	+110	5000
GX4N35	7.12×6.5×3.5	1.2	80	0.3	10	>100	-	-	10	9	-55	+110	5000
GX4N36	7.12×6.5×3.5	1.2	80	0.3	10	>100	-	-	10	9	-55	+110	5000
GX4N37	7.12×6.5×3.5	1.2	80	0.3	10	>100	-	-	10	9	-55	+110	5000
GX4N38	7.12×6.5×3.5	1.2	80	1	10	>20	-	-	10	9	-55	+110	5000

**DIP6/SMD6**

PN Series	Size (L × W × H/mm)	V <sub>F</sub> (V)	BV <sub>CEO</sub> (MIN) (V)	V <sub>CE(SAT)</sub> (MAX) (V)	I <sub>F</sub> (mA)	CTR (%)	T <sub>r</sub> (MAX) (US)	T <sub>f</sub> (MAX) (US)	t <sub>(on)</sub> (US)	t <sub>(off)</sub> (US)	T <sub>opr</sub> (MIX) (°C)	T <sub>opr</sub> (MAX) (°C)	Viso (Vrms)
GXCNY17F-1	7.12×6.5×3.5	1.65	80	0.3	10	40~80	6	8	10	9	-55	+110	5000
GXCNY17F-2	7.12×6.5×3.5	1.65	80	0.3	10	63~125	6	8	10	9	-55	+110	5000
GXCNY17F-3	7.12×6.5×3.5	1.65	80	0.3	10	100~200	6	8	10	9	-55	+110	5000
GXCNY17F-4	7.12×6.5×3.5	1.65	80	0.3	10	160~320	6	8	10	9	-55	+110	5000
GXCNY17-1	7.12×6.5×3.5	1.65	80	0.3	10	40~80	6	8	10	9	-55	+110	5000
GXCNY17-2	7.12×6.5×3.5	1.65	80	0.3	10	63~125	6	8	10	9	-55	+110	5000
GXCNY17-3	7.12×6.5×3.5	1.65	80	0.3	10	100~200	6	8	10	9	-55	+110	5000
GXCNY17-4	7.12×6.5×3.5	1.65	80	0.3	10	160~320	6	8	10	9	-55	+110	5000

Photo Transistor Coupler  
晶体管光耦

Photo Transistor Coupler  
晶体管光耦